



PROJECT REFERENCE

PROJECT NAME

CONVERSION - FABRICATED ROCKER ARM TO A CASTING

LOCATION: PERTH WA

CLIENT: AGRICULTURAL EQUIPMENT MANUFACTURER

STATUS: ONGOING SUPPLY

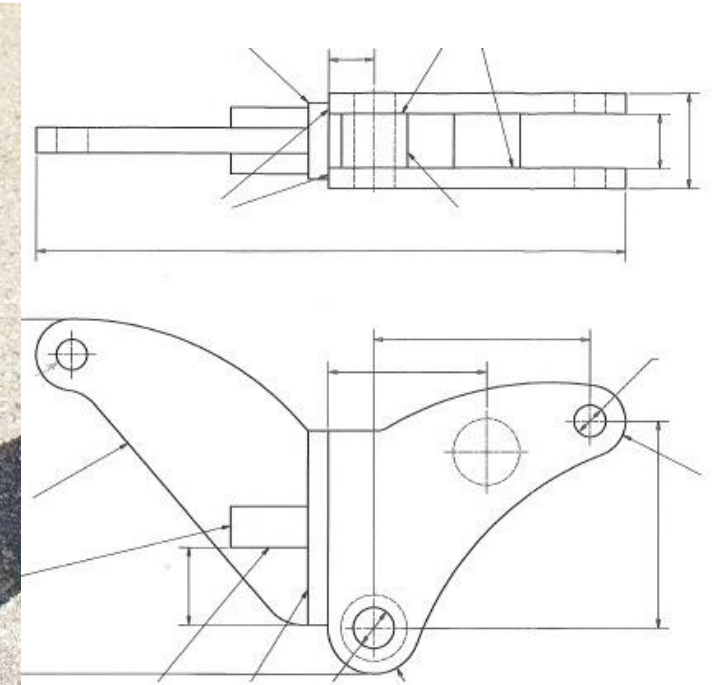
TIME OF ASSIGNMENT: 2014 Ongoing

CONTRACT VALUE: >\$100K

PROJECT BRIEF: Seeking to improve product competitiveness and performance a manufacturer asked Castech Solutions to assist with a complete design review.

Design Stage:

- Original components were designed as fabricated parts to suit in-house manufacturing processes.
- Competitive pressure brought the need to lower manufacturing costs.
- Castech explored several possible design options to introduce the casting process whilst reducing the component weight.
- Castech recommended the investment casting process because it delivered:
 - Good dimensional accuracy thereby minimising machining
 - Good surface finish and definition
 - The target price



Rocker Arm manufactured by fabrication of steel plate and tube.

Contact Details:

Unit 4, 5 Hines Road, O'Connor, Western Australia 6163. | P: +61 8 9331 4099 | F: +61 8 9467 6237 | E: enquiry@castechsolutions.com.au | www.castechsolutions.com.au



Optimising Design and Manufacture:

-

Final Cast Product



Freedom of shape provided by casting allows for optimized geometry.

Unit 4, 5 Hines Road, O'Connor, Western Australia 6163. | P: +61 8 9331 4099 | F: +61 8 9467 6237 | E: enquiry@castechsolutions.com.au | www.castechsolutions.com.au